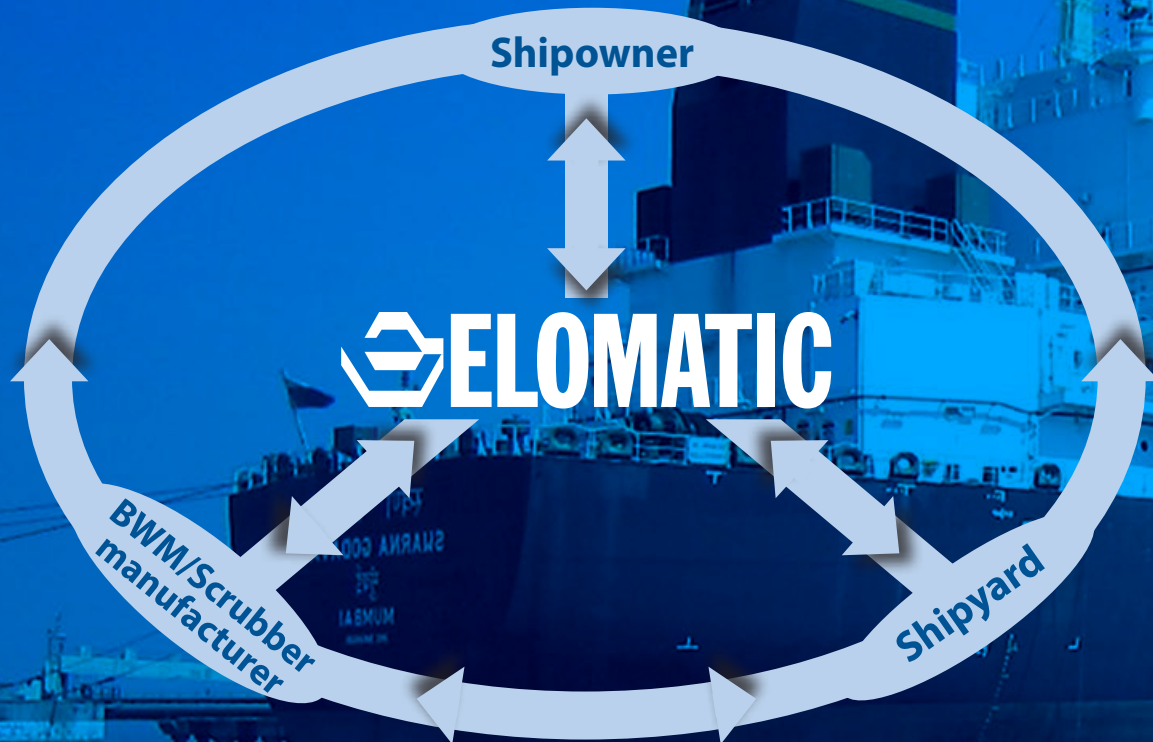




## **Ballast Water Management System Retrofits**

*Engineering, project management & site supervision*



## Ballast water management system retrofits

*Engineering, project management & site supervision*

In addition to serving shipowners and operators, Elomatic extends its retrofit-related services to BWMS equipment suppliers, shipyards, installation contractors and other stakeholders in the maritime community.

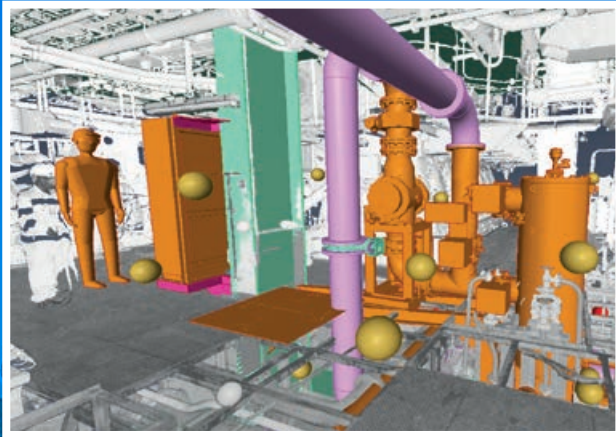
### **Concept development**

In the concept phase, a thorough feasibility study is performed to identify the most technically suitable and cost-efficient solution for each vessel. With the help of laser

scanning, we verify that there is sufficient space on the vessel for the selected solution.

### **Project execution**

In the implementation phase, Elomatic ensures an efficient result with custom-made basic and detail integration design. We establish suitable partnerships to ensure installation with the absolute minimum off-hire.



▲ Different retrofit solutions can easily be compared using point clouds in combination with 3D modelling tools.

## Contact Information



Antti Yrjänäinen  
Senior Design Manager  
Tel. +358 10 395 7601  
antti.yrjanainen@elomatic.com

## The optimised BWMS retrofit process

### CONCEPT DEVELOPMENT

#### Feasibility Study

- Shortlist of BWMS technologies and vendors
- Selection of the optimal solution and verification of space required with 3D laser scanning



### PROJECT EXECUTION

#### Basic & Detail Design

- Complete document package for classification society approval
- Annotated prefabrication drawings

#### Installation & Commissioning

- Site supervision and support

For more information, please see our ballast water retrofit guide, which covers the engineering phases, implementation schedule, and project timeframe. It also provides an overview of the main treatment system types available.

<https://resource.elomatic.com/ballast-water-management-retrofits>







Elomatic is a leading European consulting and engineering company. Our close to 1000 professionals work in machinery and equipment manufacturing, pharmaceutical, process, energy, offshore and marine industry projects.

We offer consulting, engineering, product development and project management services as well as products and turnkey solutions to industrial and public sector customers.

The cornerstones of our success are customers that are leaders in their respective fields and professional, customer-oriented and motivated personnel.

- Technical Consulting
- Engineering
- Project Management
- Product and Service Development
- Products & Turnkey Solutions
- Software Development
- Design Software Solutions

## Key customer segments

- Marine & Offshore
- Oil & Gas
- Pharmaceuticals
- Process Industries
- Energy
- Foodstuffs industry
- Starch and Potato Processing
- Machinery and Equipment Manufacturing

## Contact information

We operate globally and have clients in over 80 countries. Our offices are located in Finland, China, India, Italy, Kazakhstan, the Netherlands, Poland, Russia and the UAE.

Elomatic – Headquarters  
Itäinen Rantakatu 72, 20810 Turku, Finland  
Tel. +358 (0)2 412 411  
info@elomatic.com

[www.elomatic.com](http://www.elomatic.com)