

District heating NetInfo

Elomatic NetInfo is an internet-based service for the effective and easy management of district heating network information.

The NetInfo service gathers the district heating information in one place; all documents are centralised and easily accessible.

Several users can benefit from the system simultaneously. Licenses are acquired as needed. This enables information transfer and interaction between partners.



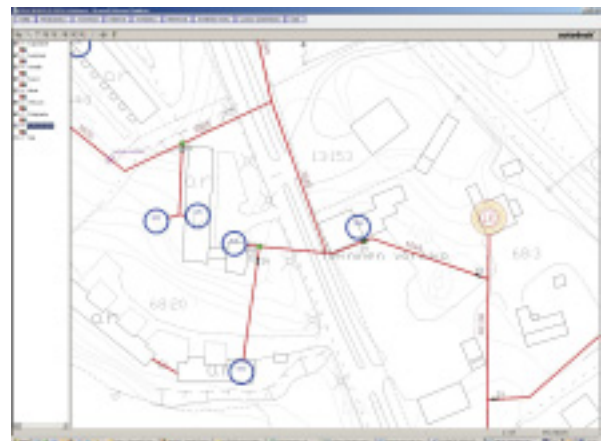
Efficient information management

NetInfo is easy to use and brings quality and cost efficiency improvements:

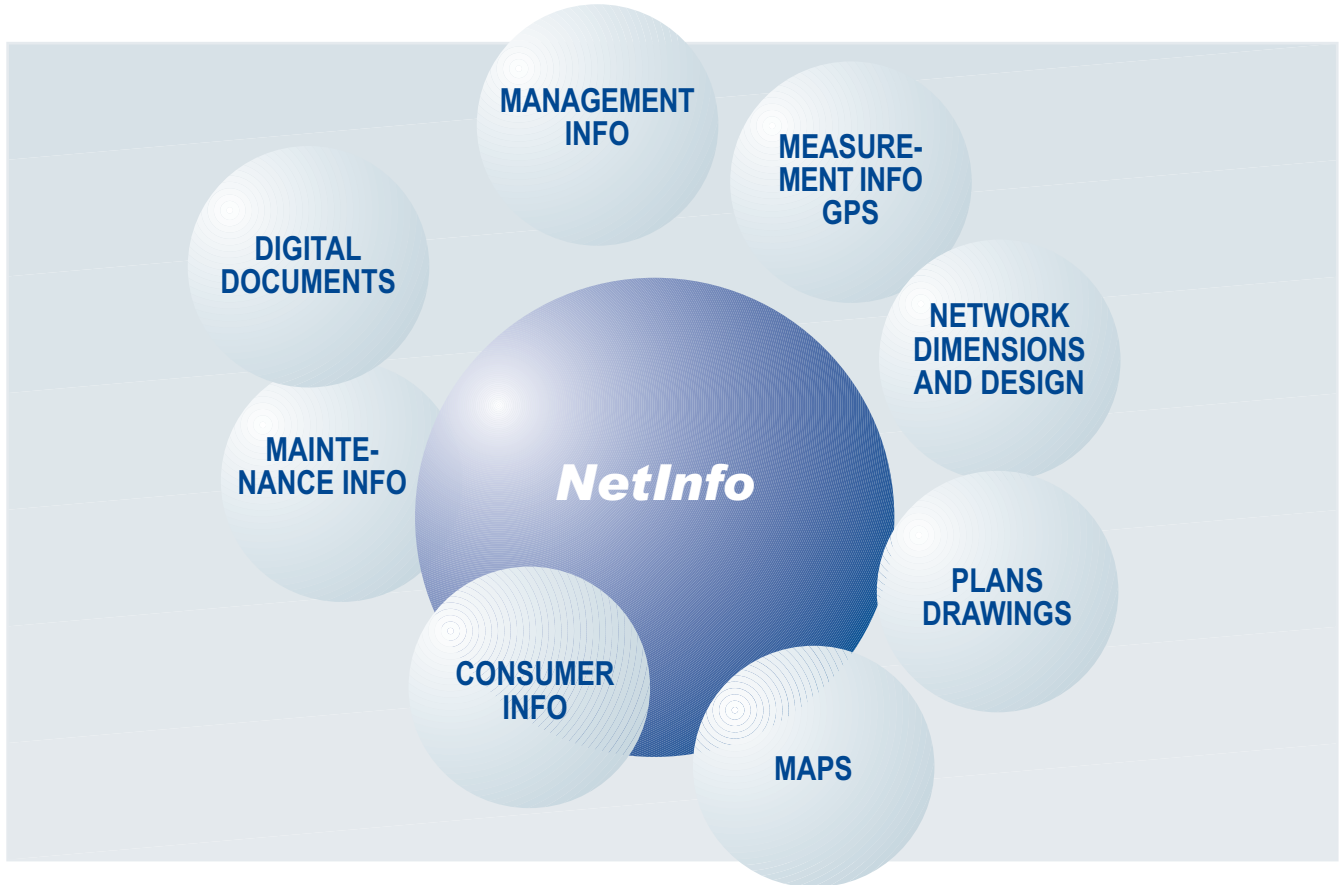
- District heating network information is accessible from anywhere where there is an internet connection.
- Extensions to the network are updated and are no longer dependent on the memory of the installer.
- The user of the service does not have to invest in software or devices. An internet connection and NetInfo license suffices.
- The service does not tie up personnel resources
- The NetInfo service is a beneficial tool for different users (management, installation and maintenance, customer service and design)

Diverse applications bring clarity to overall management

- The user can add desired **feature information** to different parts of the network and edit it.
- Network item **location information** is easily accessible.
- **Network maps** can be printed according to scale to support daily work.
- **Attachment files** such as CAD-drawings and photos can be linked to the NetInfo service.
- **Map searches** can be for example be done according to street name or customer/consumer number search criteria.



Elomatic NetInfo – fully comprehensive package



Elomatic NetInfo – at your disposal!

We offer the NetInfo service on a turnkey basis:

- We install the NetInfo system where desired and take care of transferring documentation to the system.
- We take care of software updates and data security.
- We guarantee that server space will always be sufficient for your needs.
- We offer all the required support services such as providing advice for users and training.
- We update file, map and maintenance reports.

CONTACT DETAILS

Product/Project Engineer
Henri Antikainen
tel. 014 3388 328
email: henri.antikainen@elomatic.com

Chief Engineer, Energy Consulting
Jukka Summanen
tel. 014 3388 338
email: jukka.summanen@elomatic.com



Itäinen Rantakatu 72 Kangasvuorentie 10
20810 Turku 40320 Jyväskylä
Tel. 02 412 411 Tel. 014 4467 111